



Universidad Veracruzana

Exam Booklet Sample Test

*All answers must be filled in
on the answer sheet to be valid.*



Universidad Veracruzana

PAPER ONE

Reading and Writing

1
El sello no puede ser
violado hasta que se
le indique.

Do not open until told.



60 min

INSTRUCTIONS: Read the signs. Choose the correct sentence for each one. For numbers 1–6, fill in the correct letter (A, B, or C) on your answer sheet.

EXAMPLE**CORRECT ANSWER**

A	<input checked="" type="checkbox"/>	C
---	-------------------------------------	---

0.

Be careful when leaving this boat. It can be very crowded, and it is not unusual for someone to try and steal your things.

- A** You will probably see this notice at a ticket office.
 - B** You will have to keep your wallet in a safe place.
 - C** You mustn't enter the crowd when leaving the boat.
-

1.

Museum members receive tickets to art shows one day early!
Also, get free tickets plus one guest for half price,
and free movies every summer.

- A** Members can see new art shows first.
- B** Guests of members watch movies for free.
- C** Members may only bring a guest one time.

2.

Stop smoking? Ask our receptionist about options like our
7-day course or 3-month group meetings.
You must take a health exam (no extra cost).

- A** Talk to the doctor about how to stop smoking.
- B** It should take you only a week to stop smoking.
- C** The doctor can check you for free at this office.

3.

Do you need an apartment? We need a roommate!
You must clean and cook. NO pets (three dogs are enough!)
We prefer college students. 888-256-2578

- A** Only call them if you're still in school.
- B** These people don't like animals.
- C** If you don't like helping, don't live here.

4.

The work refrigerator is cleaned every Monday morning. We don't keep anything, so don't leave food. Write your name on everything.

- A** You can leave your food in the middle of the week.
- B** It's fine to eat food if there's no name written on it.
- C** Leave food Monday afternoon and it will be gone.

5.

Return clothes for 60 days. Bring the receipt, the same credit card, or customer ID number. Clothes must be clean and in good condition.

- A** If you pay with credit, you can't return anything.
- B** You don't need your receipt to return something.
- C** If you wore the clothes, you can't return them.

6.

Come sell at our farm markets, eight months a year. Fruit and vegetables. Call 888-526-4318 to sell something cooked or baked. You must be 18+

- A** Sell anything you want if you're an adult.
- B** You must ask if you want to sell cake.
- C** Anyone can sell bananas the whole year.

INSTRUCTIONS: Read these text messages. Match each text message with the option that describes it. For numbers 7–14, fill in the correct letter (A–K) on your answer sheet. There are three EXTRA sentences.

EXAMPLE**CORRECT ANSWER**

0.

Be ready by 9 pm because our plane leaves at midnight. Meet us in the hotel lobby at that time. If you're not there, the bus will leave anyway.

L They will leave without you if you're late.

A	B	C	D	E	F	G	H	I	J	K	
---	---	---	---	---	---	---	---	---	---	---	--

7.

Lili, I'm so sorry, but I won't be available this weekend. :(My mother just arrived without calling first. We'll get to the movies soon, I promise.

8.

We've sold all seats to Toledo. There's limited space under the bus, so please bring all purses and backpacks inside with you when you get on.

OPTIONS

- A** This trip is going to be full.
- B** This person says they should do something different.
- C** These people are thinking about their family member.
- D** These people can't bring suitcases because it's too crowded.
- E** This person had a surprise when someone visited.
- F** It will be expensive to pack lots of things.
- G** This person has travel problems because of family.
- H** This person has a good reason for not helping.
- I** These people must stay together from the beginning.
- J** This person doesn't want to go on a trip.
- K** This person needs to decide soon.

9.

Hey everyone, I can't go tonight. I have to take my grandmother to her art class early tomorrow morning. We could get together tomorrow night instead or maybe Friday.

10.

All passengers on Flight 1359: To save time, please come to the information desk to tell us how many bags you have. Remember, you must pay for any extra luggage.

11.

We're hiking tomorrow! Bring water, snacks, and a jacket because it may take a while to climb to the mountain top. To be safe, we'll wait for everybody before leaving.

12.

I've been at the train station since 6 am! Where are you? I can't be late for work again! So sorry, but you'll have to get a taxi.

13.

Aunt Linda, we want to see you but you hate flying. So, we're planning to have our vacation at the state park near you! Call me to make plans!

14.

Caroline, I know you're busy, but you need to tell us if you're going to the work meeting so I can get you a flight. You have until tomorrow.

INSTRUCTIONS: Read this text about a country in Europe. For numbers 15–22, fill in the correct letter (A, B or C) on your answer sheet.

EXAMPLE**CORRECT ANSWER**

0. This person traveled to Sweden _____.

A to see a friend

B with family

C for work

A ☒ **C**

Sweden

Last year, my sister and I took a trip to Sweden, a beautiful country in Northern Europe. You might think of it as big because of its size (498,511 square kilometers); there are only four European countries larger than Sweden: Russia, Ukraine, France, and Spain. However, it is considered small because of the number of Swedes living there. Holland, a little country, has seventeen million people (and sixteen million bicycles), but Sweden only has ten million. There are about half as many cars because trains are a more popular type of transportation. Bikes are the second favorite, except, of course, in the cold winters.

Sweden's neighbors are Finland to the east, Denmark to the south, and Norway to the north and west. The capital is Stockholm. It wasn't officially called a city until the year 1252, but people have been living there for eight thousand years. Stockholm sits in the middle of fourteen islands. Boats connect the islands, but also what seems like hundreds of bridges (the real number is fifty-seven), so bring a map!

Sweden is famous for green spaces, maybe because only thirteen percent of Swedes live in the country (three percent are farmers), but eighty-seven percent live in cities like Stockholm. It's also famous for fish, meatballs with potatoes, and soups, while chicken and pork are available yet not as popular. We loved desserts made with local fruit—my favorite was lingonberry jam with yogurt, while my sister liked blackberry ice cream. The lemon cake looked good, too.

15. Sweden is the _____ largest country in Europe.
A third **B** fourth **C** fifth
16. There are about ten million _____ in Sweden.
A cars **B** people **C** bikes
17. The same country is both _____ of Sweden.
A west and south **B** below and east **C** above and west
18. There have been homes in the Stockholm area _____.
A longer than it was a city **B** since the 13th century **C** since the 8th century
19. Getting around Stockholm might be confusing because of the _____.
A islands **B** bridges **C** boats
20. Very few Swedish people live _____.
A on farms **B** in towns **C** in cities

- 21.** At a restaurant you will probably find more _____ dishes.
A chicken **B** fish **C** vegetable
- 22.** This person especially enjoyed _____ made with Swedish fruit.
A cake **B** ice cream **C** jam

PART FOUR

NUMBERS 23–30

INSTRUCTIONS: Read this text about sugar. Choose the words that complete the text. For numbers 23–30, fill in the correct letter (A, B, or C) on your answer sheet.

EXAMPLE

Sugar **(0)**_____ one of life's sweet ingredients.

CORRECT ANSWER

A ■ C

- 0.** **A** am **B** is **C** are

Sugar

Sugar **(0)** is one of life's sweet ingredients. Today, most of our sugar is made **(23)** in five countries and is highly processed. **(24)** When we're children, we love sugar (think of the candy you probably **(25)** eat all the time, years ago). We know there's sugar in dessert, but it **(26)** isn't be a surprise that sugar is found in most things we eat. Juice, for example, is not the **(27)** healthiest drink in the world because of added sugar. Lactose, the most important ingredient in milk and yogurt, is just **(28)** a type of sugar. A little sugar is nice, but **(29)** even much of a good thing is bad. What can we do? Eat natural foods. Think of sugar like a friend who lives far away that you don't see **(30)** most of the time.

- | | | | |
|-----|----------------------|---------------------|---------------------|
| 23. | A on | B at | C in |
| 24. | A Where | B Why | C When |
| 25. | A were eating | B have eaten | C are eating |
| 26. | A must | B might | C should |
| 27. | A healthy | B healthier | C healthiest |
| 28. | A any | B another | C other |
| 29. | A too | B very | C not |
| 30. | A part | B all | C some |

INSTRUCTIONS: Read this email about plans for a birthday. Think of the correct words to complete the text. For numbers 31–38, WRITE ONE word in each space on your answer sheet.

EXAMPLE

I'm really glad you're coming (0)_____ visit...

CORRECT ANSWER

to

New Message

To

AuntyJ

Cc

Bcc

Subject

party

Hi Aunt Jane!

I'm glad you're coming (0) to visit for mom's birthday. Do you think you (31)_____ try to arrive before dinner on Friday? If you get (32)_____ early, we can make a cake. You probably remember her favorite kind, which is carrot, the (33)_____ as you. (She's coming on Saturday afternoon, so we'll have time (34)_____ she arrives. But make sure she doesn't find (35)_____ about the cake before the party.) Bring a card—you know she likes (36)_____ kinds of traditional things. It's a quick visit, but don't worry. We'll have so (37)_____ more time over the holidays.

Also, I finished your books. Remind me to give (38)_____ back to you!

Have a safe trip, love,

Lana

Send

A



Universidad Veracruzana

PAPER TWO

Listening Comprehension

Do not open until told.



length of the recording

2
El sello no puede ser
violado hasta que se
le indique.

PART ONE

NUMBERS 1–5

INSTRUCTIONS: You will hear five short conversations. For numbers 1–5, fill in the correct letter (A, B or C) on your answer sheet. Here is an example.

EXAMPLE

CORRECT ANSWER

A ☐ B ☒ C ☐

0. Where is the bank?

A

Cinema	Bank	Supermarket
Post Office		

B

Cinema	Bank	Post Office
Supermarket		

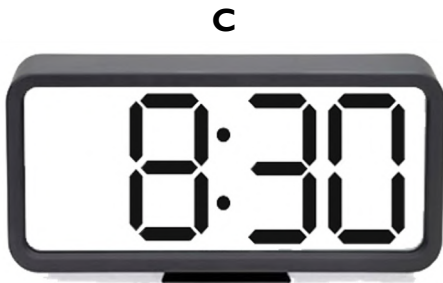
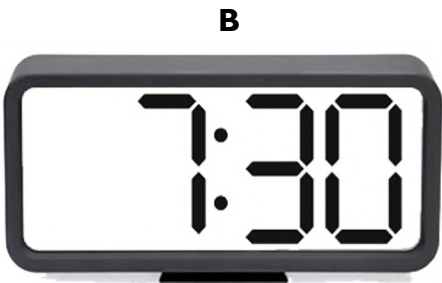
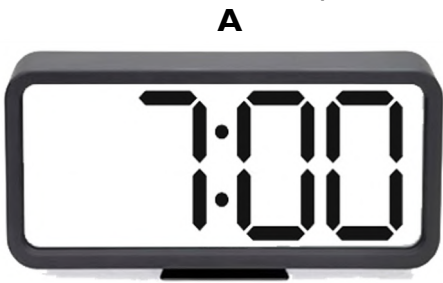
C

Cinema	Supermarket	Post Office
Bank		

1. What did they watch on TV?

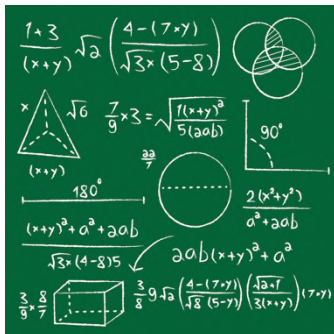


2. What time does the opera start?



3. Which subject will these friends take together?

A



B



C

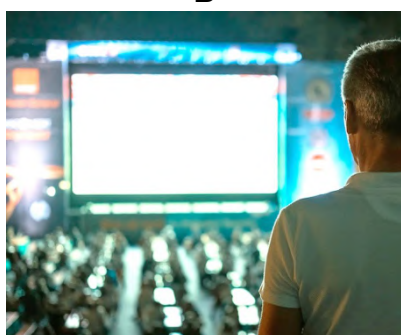


4. What did the man do on Friday?

A



B



C

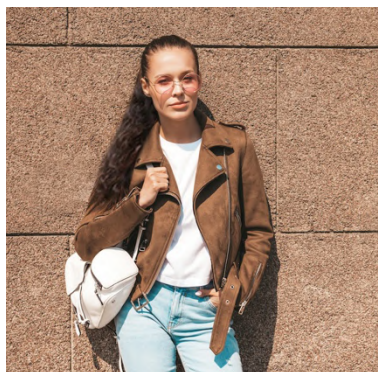


5. Which coat will the woman try on?

A



B



C



PART TWO

NUMBERS 6–10

INSTRUCTIONS: Now you will hear a longer conversation. For numbers 6–10, fill in the correct letter (A–H) on your answer sheet. There is an example and there are three extra answers.

EXAMPLE

CORRECT ANSWER

A	B	C	D	E	F	G	H	
---	---	---	---	---	---	---	---	--

0. Todd

I by bus

PEOPLE

6. Emily
7. Todd's daughter
8. Emily's sister
9. Todd's neighbor
10. their boss

HOW THEY USUALLY TRAVEL

- A by train
- B on foot
- C by taxi
- D with friends
- E by bicycle
- F by boat
- G by motorcycle
- H by car

PART THREE

NUMBERS 11–15

INSTRUCTIONS: You will hear a short recorded message. For numbers 11–15, fill in the correct letter (A, B or C) on your answer sheet. There is an example.

EXAMPLE

CORRECT ANSWER

0. The woman is selling something that belongs in the ____.

A living room

B bedroom

C kitchen

A	B	
---	---	--

11. The color of the Easy Chef bowl is ____.

A green

B blue

C red

12. Easy Chef works best with ____.

A lots of vegetables

B mostly frozen food

C many types of things

13. It takes two minutes to cook ____ with Easy Chef.

A meat and rice

B fish and vegetables

C chicken and fish

14. The woman's idea for breakfast is to make ____.

A eggs with meat
and cheese

B a ham and cheese
sandwich

C French toast with
hot cereal

15. If you want an Easy Chef, ____.

A you must buy
it today

B paying cash is
cheaper

C there's a special
offer

INSTRUCTIONS: Now you will hear two people talking. For numbers 16–20, write ONE or TWO word(s) or number(s) to complete each gap. Write the words you hear in the correct space on your answer sheet. There is an example.

EXAMPLE

0. Tour to:

CORRECT ANSWER

Guanajuato

CENTRAL MEXICO TOURS

0. Tour to:

Guanajuato

16. Available date:

July _____

17. Places on the tour:

A cathedral and a _____

18. Discount for:

19. Pay only by:

20. Contact:

Mr. _____